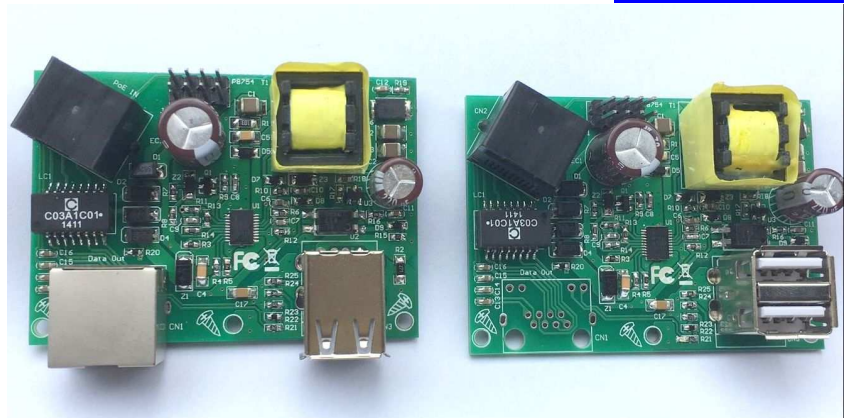


# WT-AF-USB2-OEM splitter with 2 USB sockets



Product Description - WT-AF-USB2 surface mounted PoE charger

This device provides a low cost solution for delivering power to a USB device over 328ft of network cable. It allows power to be carried on 10/100/1000 network cables with either 802.3af PoE switches or passive injectors with any CAT5e, CAT6 or CAT7 Ethernet network cable.

Intended for use with Cisco or similar PoE switches – this active PoE solution negotiates with the switch to activate power and provide it to the client device. It is a compact and cost effective power solution. The PoE switch supplies 48 or 56 volts DC at the source location. The higher DC voltage means the current is reduced by a factor of 9, and then carried with 90% less loss over the Ethernet cable from the source, the 5v converter at the remote end allows you to extend the distance with this product for this application up to 328ft or 100 meters.

We also offer kits with up to 16 injectors and splitters – so one power supply can feed 4, 8, 12 or 16 USB splitters.. These kits include the Multi Port Passive POE injector and a power supply of either 30 watts, 60 watts or 120 watts.

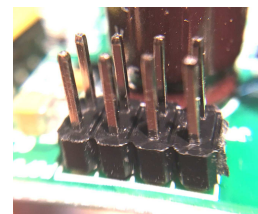
The Ethernet cable can be 568A or 568B style, and only 2 pairs are required. Optional data from the switch or injector on a female RJ45 connector. For use with WiFi-Texas passive injectors - 2 jumpers need to be set.

Specifications

Power and data source	RJ45 female connector
Data out	RJ45 female connector ( WT-GAF version ) 10/100/1000 data rate
DC output	Female USB – Apple pinout Female USB – Android pinout
USB alignment	Vertical ( WT-AF-USB2) Horizontal (WT-GAF-USB2)
Power input Pins	1&2 and 3&6 – either polarity – mode A
802.3af ( mode A or mode B)	4&5 <b>+</b> and 7&8 <b>-</b> - mode B – jumper option
Input Voltage Max	Up to 57 volts
Input Current at 48v	300 ma input delivers 2 amps out
Output Voltage Max load (5v10w)	5v +- 2% at 2 amps 10 watts total
Output Voltage no load	5.2v
Operating Temperature	0°C ~ 50°C
Size	47 x 67 x 22 mm

Charging current

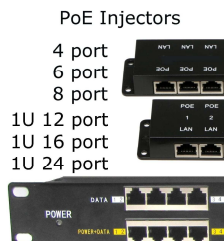
- Apple iPad – 2 amps full charge rate
- Android – 2 amps full charge rate
- Other USB – 10 watts available



These 4 jumpers enable mode B operation



PoE Tester



WiFi-Texas injectors



Any PoE Switch